

# Alphi / Twenty One



**Alphi is a wettable granular insecticide based on 10% Azamethiphos with various natural ingredients to which flies are irresistibly attracted. The product is applied either by paiting as well as by spraying. Alphi is used as adulticide for control of flies in cowsheds, stables and poultry sheds. Moreover Alphi is effective against darkling beetles (Alphitobius diaperinus) in poultry and pig barns. Alphi ensures a larvicide as well as adulticide effects for an effective control of darkling beetles with a residual effect up to 8 weeks.**

## Recommendations of usage

### Recommendations for control of flies

It is very important to apply the product on surfaces where the flies gather and where they like to land. Observation of the stable before the treatment to see where the flies rest is recommended. These surfaces are, for instance, door and window frames, walls, pipes, milk carriers... The product will be applied out of reach of animals. It is advised to treat with an interval of 4 to 6 weeks. Apply Alphi (adulticide) with a fly larvicide such as Maggots to ensure a total control of flies.

### Recommendations for control of darkling beetles

Use ALPHI as a spray during sanitary emptying, after the bedding has been placed and before the equipment (water troughs, feeders, etc.) is introduced, once the presence of tenebrions has been detected. Apply mixture in two steps:

- Spray half of the solution under the plates, on base of walls (30 to 50 cm high) and on the edge of the bedding (on a 50 cm wide strip).
- Spray the other half over the entire litter box.

Do not treat areas intended to receive food or likely to be licked.

Remanence period is between 6 to 8 weeks.

## Dosage

### For control of flies

Dosage varies following way of use :

#### Spraying

Dilute 250 g Alphi in 2L lukewarm water to treat 100 m<sup>2</sup> ground surface. Mix carefully until you obtain a homogeneous solution. Then apply the solution by making spots

#### Painting

Dilute 250g Alphi in 250 ml lukewarm water to treat 100 m<sup>2</sup> ground surface. Use Alphi by painting at least 30 spots of +/- 20X30 cm.

#### Painting on displays

Dilute 250g in 80 ml lukewarm water to treat 100 m<sup>2</sup> ground surface. Mix carefully until you obtain a homogeneous solution. To maximize effectiveness, apply the solution on the panels in strips distant from each others. Hang the displays.

### For control of darkling beetles

Dilute 500g Alphi in 10L lukewarm water to treat 100 m<sup>2</sup> ground surface. Mix well until solution is sufficiently fluid to be sprayed. Apply the solution obtained using a sprayer without forming mist.



### FORMULATION TYPE

Wettable granular (WG)

### ACTIVE INGREDIENT

Azamethiphos 10%

### CHEMICAL CLASS

Organophosphate

### MECHANISM OF ACTION

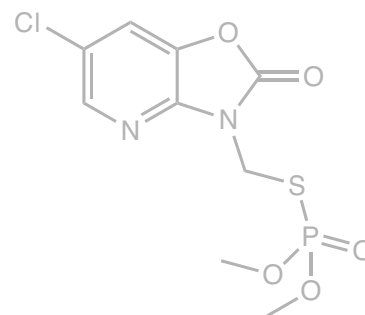
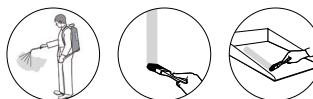
Inhibition of acetylcholinesterase. The acetylcholine, therefore, remains intact allowing the electrical signal to proceed without interruption. This leads to over-excitation of the insect and eventually to its death.

### TARGET

Flies, Darkling beetles

### PACKAGING

100g, 250g, 500g, 1kg



**Azamethiphos**