

VIGILEC ZERO SENSOR V1ZS

quick guide - guía rápida - guide rapide



Internal configuration

Configuración interna
Descriptif intérieur

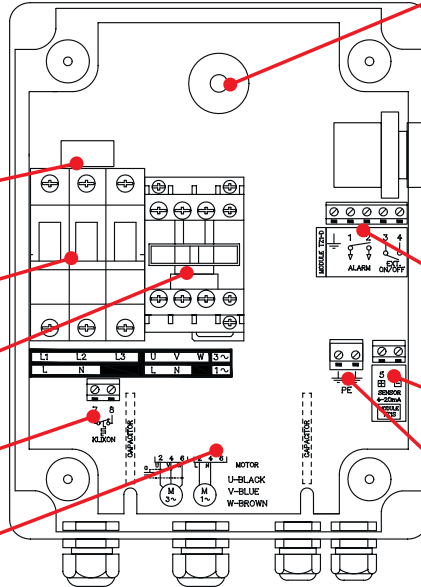
CURRENT TRANSFORMER
TRANSFORMADOR DE INTENSIDAD
TRANSFORMATEUR D'INTENSITÉ

CIRCUIT BREAKER
MAGNETOTÉRMICO
DISJONCTEUR

CONTACTOR
CONTACTOR
CONTACTEUR

KLIXON TERMINAL BLOCKS
BORNAS DE KLIXON
BORNES DE KLIXON

CAPACITOR PLACE
SITIO CONDENSADOR
EMPLACEMENT CONDENSATEUR



PLUG-IN MODULE SOCKET
BASE MÓDULO ENCHUFABLE
SOCLE MODULE EMBROCHABLE



MAN - 0 (RESET) - AUTO SELECTOR
SELECTOR MAN - 0 (RESET) - AUTO
COMMUTATEUR MANU - 0 (RESET) - AUTO

CONTROL TERMINAL BLOCKS
BORNAS DE CONTROL
BORNES DE COMMANDE

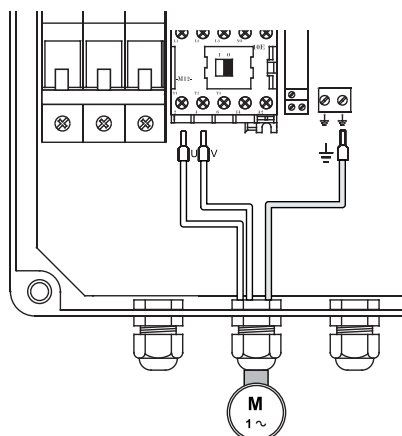
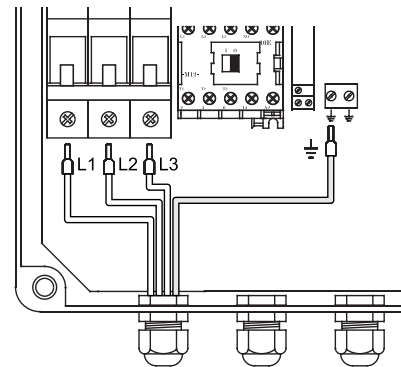
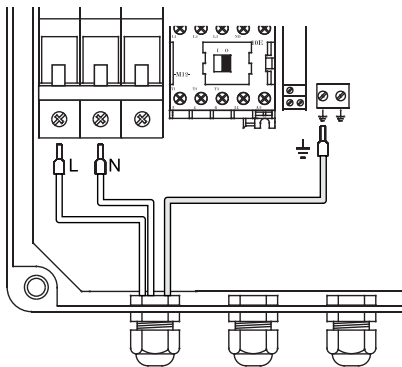
PRESSURE SENSOR TERMINAL BLOCKS
BORNAS SENSOR DE PRESIÓN
BORNES CAPTEUR DE PRESSION

GROUND TERMINAL BLOCKS
BORNAS DE TIERRA
BORNES DE TERRE

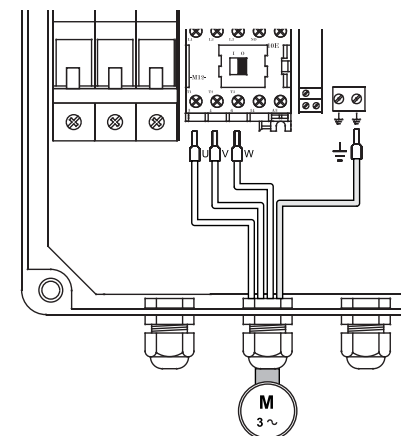
CABLE GLANDS / PRENSA ESTOPAS / PRESSE-ÉTOUPES

Power connections

Conexiones de potencia
Raccordements de puissance



M
1~



M
3~

Control module

Módulo de control
Module de contrôle

LOW PRESSURE SETTING (PLo)
AJUSTE PRESIÓN BAJA (PLo)
RÉGLAGE PRESSION BASSE (PLo)

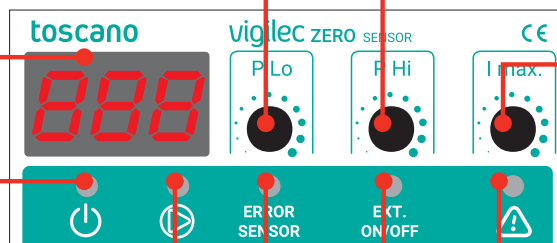
HIGH PRESSURE SETTING (PHi)
AJUSTE PRESIÓN ALTA (PHi)
RÉGLAGE PRESSION HAUTE (PHi)

DISPLAY
PANTALLA
AFFICHEUR

POWER ON
PRESENCIA TENSIÓN
PRÉSENCE TENSION

PUMP RUNNING
BOMBA EN MARCHA
POMPE EN MARCHÉ

SENSOR FAILURE
FALLO SENSOR
DÉFAUT CAPTEUR



OVERLOAD SETTING (I_{max})
AJUSTE SOBRECARGA (I_{max})
RÉGLAGE SURINTENSITÉ (I_{max})

OVERLOAD / PHASE LOSS
SOBRECARGA / FALTA DE FASE
SURINTENSITÉ / MANQUE DE PHASE

EXTERNAL ON/OFF CONTROL
CONTROL ON/OFF EXTERNO
COMMANDE ON/OFF EXTERNE

L2.0 LOW PRESSURE
PRESIÓN BAJA
PRESSION BASSE

SEN S.c. SENSOR FAILURE (SHORT CIRCUIT)
FALLO SENSOR (CORTOCIRCUITO)
DÉFAUT CAPTEUR (COURT-CIRCUIT)

H4.0 HIGH PRESSURE
PRESIÓN ALTA
PRESSION HAUTE

SEN O.c. SENSOR FAILURE (BROKEN WIRE)
FALLO SENSOR (HILO CORTADO)
DÉFAUT CAPTEUR (FIL COUPÉ)

OuL OVERLOAD
SOBRECARGA
SURINTENSITÉ

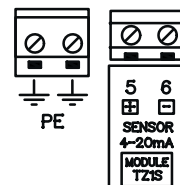
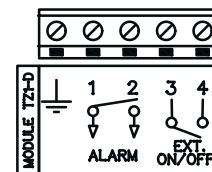
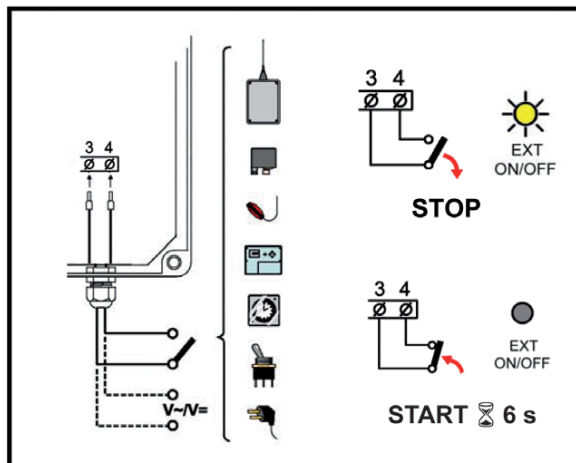
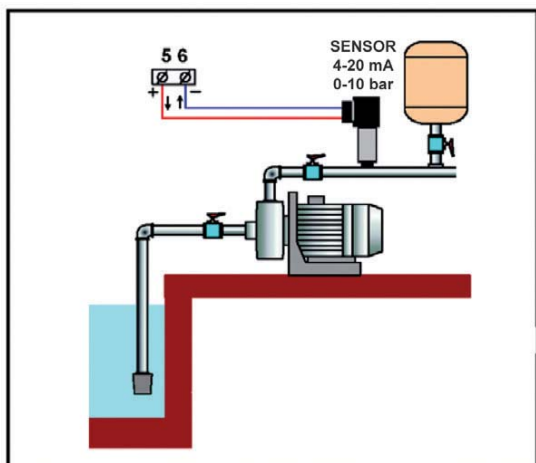
Err Arr SUCCESSIVE STARTS DETECTION
DETECCIÓN ARRANQUES SUCESSIVOS
DÉTECTION DÉMARRAGES SUCCESSIFS

Und UNDERLOAD
BAJACARGA
SOUS-INTENSITÉ

Err PrS ZERO FLOW DETECTION
DETECCIÓN CAUDAL CERO
DÉTECTION DÉBIT NUL

Control connections

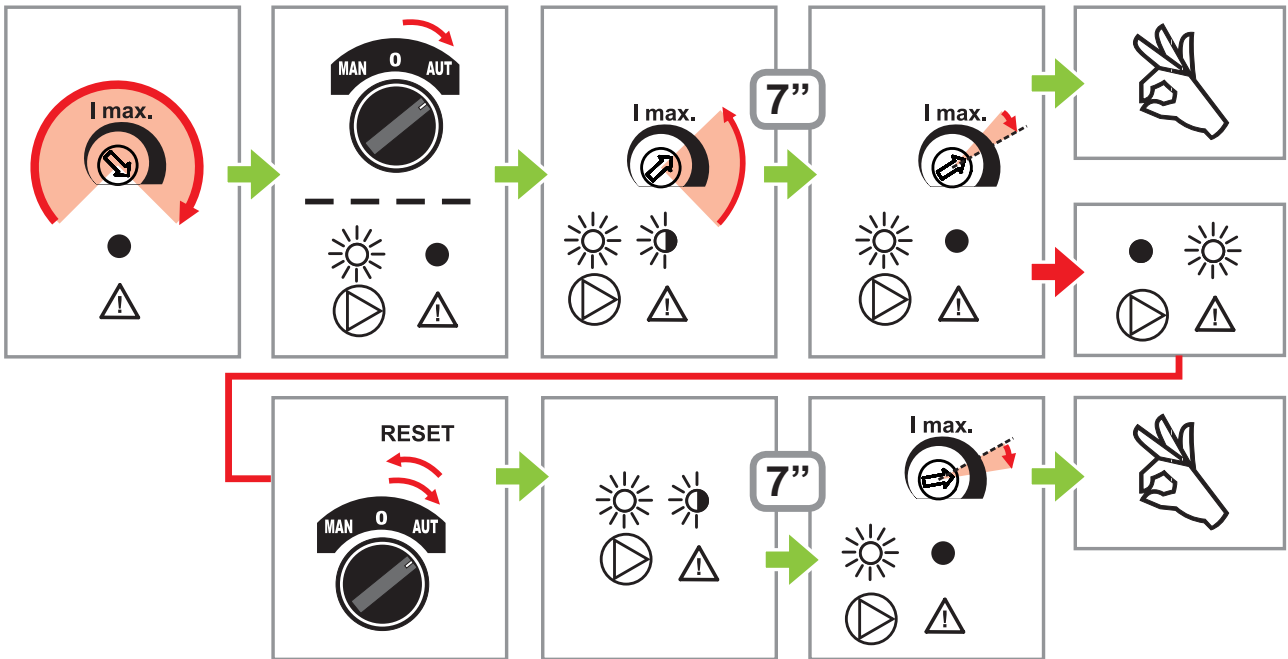
Conexiones de control
Raccordements de commande



Overload setting (Imax)

Ajuste de sobrecarga (Imax)

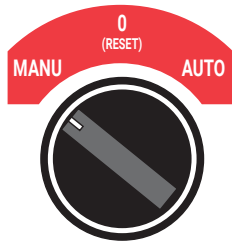
Réglage de surintensité (Imax)



Pressure settings (PLo/PHi)

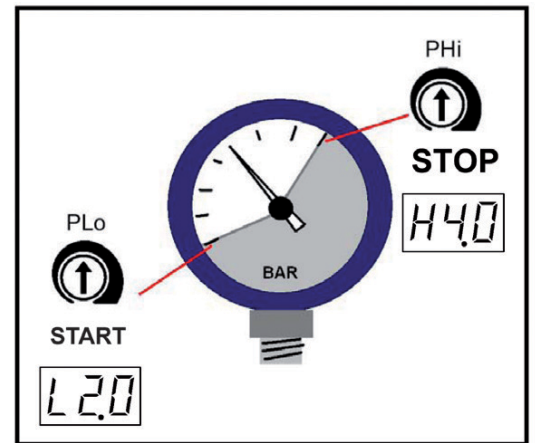
Ajustes de presión (PLo/PHi)

Réglages de pression (PLo/PHi)



MARCHA FORZADA (MODO MANUAL)
MARCHE FORCÉE (MODE MANUEL)
FORCED START (MANUAL MODE)

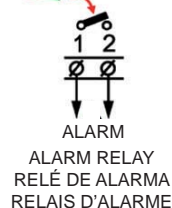
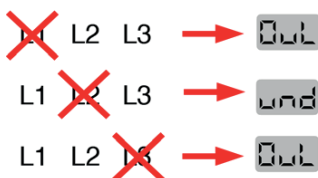
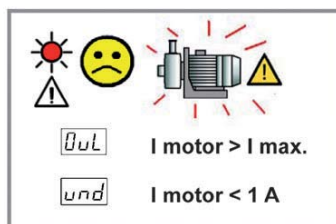
BOMBA NO PROTEGIDA
POMPE NON PROTÉGÉE
PUMP NOT PROTECTED



Pump failure detection

Detección de fallo de bomba

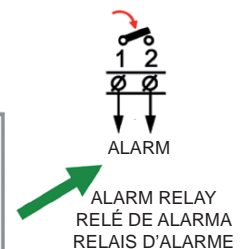
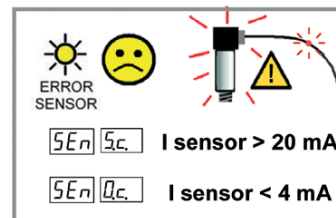
Détection de défaut pompe



Sensor failure detection

Detección de fallo de sensor

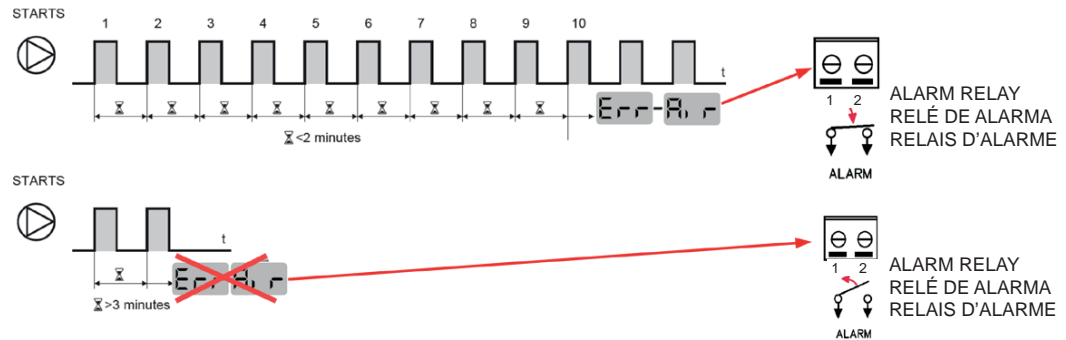
Détection de défaut capteur



Successive starts detection (Err-Air)

Detección de arranques sucesivos (Err-Air)

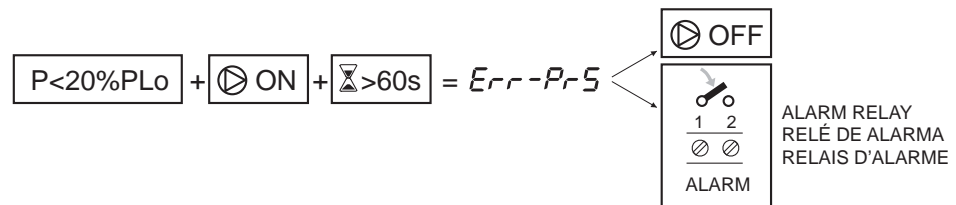
Détection de démarrages successifs (Err-Air)



Too low pressure detection (Err-PrS): Pipe breakage, valve closed at the discharge...

Detección de presión muy baja (Err-PrS): Rotura de tubería, válvula cerrada en la impulsión...

Détection de pression trop faible (Err-PrS): Rupture de canalisation, vanne fermée au refoulement...



Technical specifications

Especificaciones técnicas

Spécifications techniques

Supply voltage	230V~ I/III or 400V~ III (according the model) / -20%...+30% / 50/60Hz
Pump current range	1.3...18A / AC3 or 1.3...25A / AC3 (according the model)
Overload setting (alarm trip in 7 seconds)	1.2...19A or 1.2...30A (according the model)
Low pressure setting (PLo)	0.1...9.8bar
High pressure setting (PHi)	0.3...10bar
External ON/OFF control	Dry contact or voltage from 6 to 250V~/V=
Terminal blocks wiring size	10mm ² (power) / 4mm ² (control)
Cable glands configuration	Mains: 1xM20 or 1xM25 (according the model) Motor: 1xM20 or 1xM25 (according the model) Control: 2xM16
Protections	Overload, phase failure and over-voltage
Air error activation (Air-Err)	Start to start <2 minutes (>10 starts)
Air error deactivation (Air-Err)	Start to start >3 minutes
Pressure error activation (Err-PrS)	Pressure <20% PLo (>60s)
Sensor input	4-20mA, 0...10bar (sensor must work from 11V=)
Sensor failures detection	Open circuit and short circuit
Alarm contact	5A - 250V~ / 5A - 30V=
Alarm contact activation	Overload, phase failure, sensor failure, air error and pressure error
Recording information (PUMPCHECK)	Module identification number, counters resets, pumps running hours, pumps starts, pumps alarms and last alarm tripping current
Size/Weight/IP/Temperature	240(height)x190(width)x110(depth)mm / 1820g / IP66 / -10°...+55°C