

DétruiRAT® Maxi-Prises 6000V[®] V2



DétruiRAT

Référence modèle : DétruiRAT® Maxi-Prises 6 000 V[®] V2

DC12V $\overline{\text{---}}$ 2,5A 30.0W

Fabriqué en Belgique

Eureka-Concept srl

rue Houssière, n°1 à 7911 Frasnes-lez-Anvaing



Manual in English
and Nederlands



Scan me

Important safety instructions.

⚠ WARNING. Risk of fire, explosion, radiation, rodent contamination, radiation, electrocution and serious injury.

Before using this device, carefully read the instructions and warnings in this manual and on the device. When using an electrical device, certain basic precautions should be followed, including the following.

These warnings apply to the device and, where applicable, to all parts, accessories, chargers, or AC adapters.

Risk of explosion and fire: do not use in or near areas containing chemicals, liquids, flammable or combustible products such as petrol, or in areas where vapours from these products may be present. Do not use in the presence of combustible and flammable materials such as straw, hay, feathers, down, paper, cardboard, wood, plastic, PVC, fabric, etc. After a capture, an electric shock causes sparks in the trap's electrocution cell to kill the rodent. Sparks between the electrodes could ignite nearby or surrounding combustible and flammable products and materials. Always disconnect the device before performing any work on it. If the electrodes are dirty, disconnect the device, wait 20 seconds and clean to remove cobwebs, dirt and/or any other deposits.

Risk of serious injury, radiation, contamination, radiation and danger of electrocution.

This appliance is not intended for use by children under 16 years of age or persons with reduced physical, sensory or mental capabilities or lack of experience and knowledge, even if supervised.

Cleaning and maintenance by the user must not be carried out by children. Children must not play with the appliance.

This device may emit significant radiation and electromagnetic waves, so do not place it near electronic devices. People with pacemakers, cardiac implants or other devices are strongly advised not to approach the device when it is in operation. Never touch the device before reading the information on the digital screen. Electrocution or capture may be in progress, and if you disconnect the device, a rodent may escape. Whether dead or alive, never touch a rodent without protection, as they are carriers of many diseases and parasites. In case of contact, their urine can be dangerous to humans. In general, rodents will always flee, but if you are bitten or scratched, contact a doctor immediately and specify that it was a wild rodent.

Do not use the device in the presence of children. Do not place your hands or any other part of your body near the openings and moving parts of the device. Do not wet the trap and do not use it in the rain or in a damp place. Do not insert anything into the trap, such as screwdrivers, wires, metal bars or other conductors. Never blow compressed air onto the device, as this may cause electrocution. Whether connected to the mains (230V-12V) or to a battery (12V), the 12V DC current is transformed into 6000 Volts. Never touch the trap when it is connected. Before doing anything, disconnect all power sources and wait 20 seconds before proceeding. Do not modify the trap; only use the adapter supplied and recommended by the manufacturer. Do not place the trap in a milking parlour, bathroom, shower room, damp room, near a water source or near a swimming pool.

Do not use the device in the presence of birds, pets or any other animals. This device is designed to trap and eliminate rats and other harmful rodents. Do not use it near horses or any other fearful animals, as the snapping of the trap could frighten them, and the trap could be trampled on and destroyed. Animals could be seriously injured or even electrocuted.

ICE 6047-6181 (2016-01) This device must be used with its separate power supply unit ! 

1. How the DétruiRAT Maxi-Prises trap works.

The DétruiRAT® Maxi-Prises trap is a high-performance, automated device designed to eliminate rodents. **Equipped with cutting-edge technology and intelligent programming**, the Maxi-Prises has been designed to trap a rat, eliminate it quickly, reset itself, and then capture other rats (in one night, we managed to capture and eliminate 11 rats). The collection tray makes it easy to remove the carcasses.

When activating the trap, be sure to follow the instructions displayed on the screen. After starting the trap, **never interfere with it without reading the information on the screen**, as this could interrupt a capture or electrocution cycle.

When a rodent enters the trap tunnel, one of the two infrared barriers activates a centralised gear motor that closes both trap doors in less than 100 milliseconds. Trapped, the rat tries to escape and heads towards the electrocution cell, where it receives a 6,000 V shock, electrocuting it instantly and painlessly.

The duct leading to the electrocution chamber has an internal diameter of 75 mm. Mice, young rats, adult rats and dominant rats can climb up to the electrocution chamber without any problem. Intruders (hedgehogs, pigeons, chickens, adult cats or others) that are too large to pass through this 75 mm conduit will not be electrocuted and will remain in the trap. They will be released automatically after 3 hours and 30 minutes.

Exercise extreme caution with your pets, such as kittens, chicks, birds and other small animals, as the DétruiRAT® Maxi-Prises trap does not discriminate and will electrocute any animal or bird that reaches the electrocution cell. **DétruiRAT® traps cannot differentiate between protected animals and other rodents.**

After trapping and electrocuting an animal, the Maxi-Prises automatically reloads after five minutes and has no capture limit. It will stop trapping once the tray is full.

2. Bird protection mode

The Maxi-Prises has a **bird protection mode**. If you move the slider to the left in mode

"Bird protection": the trap will automatically stop at dawn and resume operation at dusk. This will prevent you from trapping birds during the day. Despite this safety feature, if there is a risk of trapping birds or pets, opt for the DétruiRAT® Vif trap or the DétruiRAT® Mort ou Vif trap set to the "live" position. Once trapped, rats and rodents do not all react in the same way. If the rat does not immediately climb into the electrocution chamber, the trap will activate after 7 minutes, emitting clicking sounds designed to scare the rat and encourage it to climb in more quickly.

After a capture, if the animal does not climb up within 3 hours and 30 minutes, you may have trapped an intruder. In this case, the screen will indicate this. Please note that animals are automatically released after this period of time. To give them time to escape, the trap will wait 5 minutes before reactivating the two infrared barriers.

If you regularly have intruders, you can set up a trail camera to see what is happening, or you can set up a Vif trap, a Mini Prise trap or a Mort ou Vif trap.

When the trap is new, the first rats caught may not climb up as quickly, as there are no traces of their scent in the tube leading to the electrocution chamber.

In the morning, if your trap beeps and you find rats in the tray, it is essential to empty it as quickly as possible, as the proliferation of flies can disrupt the operation of the device and cause premature wear of the parts.

If there is no risk of trapping birds, you can set the trap to 24-hour mode.

If you have a large number of flies in your establishment, set the trap to "Bird Protection" mode. This will turn the trap off in the morning and prevent false detections during the day.



When the trap is in bird protection mode, it does not operate during the day. If rats come during the day, they will not be trapped, but they will become familiar with the trap and will be more likely to return at night. If you see rats during the day, especially young rats and larger, older rats, this indicates that they are forced to come out during the day to feed. This situation could mean that you are facing a real infestation. Take action immediately!

3. Setting up the DétruiRAT trap

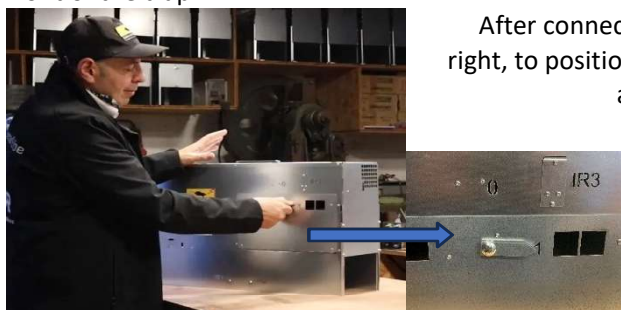
The trap is supplied with a 230 V – 12 V DC adapter. **Never use another adapter or an adapter from another type of DétruiRAT® trap**, as each type of DétruiRAT trap® has its own type of adapter.

To connect the adapter, connect the male cord of the adapter to the female cord of the trap. The adapter is located behind the battery storage door on the left side of the trap. Lift the door to remove it from its housing.

In the battery compartment, in the rear wall, you will find a hole through which you can pass the cord to the back of the trap. This will prevent cables from lying on the floor or on the front of the trap.



After connecting the trap's power supply, turn the rat box latch to the right, to position 1, keeping a safe distance to avoid injury when opening and closing the doors and moving parts. Be careful, as the trap closes and opens instantly with a loud snap. Sensitive people or animals nearby may be startled. This action allows the electronics to check that the trap and infrared sensors are working properly. A series of data will be displayed on the screen. Always follow the information when starting up and



never interfere with the trap without reading the instructions displayed on the screen.

When the Maxi-prises trap is activated, a short beep will sound, followed by a second short beep after closing and opening. The screen will then display the power supply voltage, which varies from 12 to 13.2 V depending on the type of power supply. This means that the trap is working.

If you are concerned about trapping birds, move the slider to the left in "Bird Protection" mode.

[Familiarise yourself with how Bird Protection mode works. Read the instructions on the screen and listen to the beep.](#)



4. Digital display, beep and bird protection mode:

The Maxi-Prises trap is an automated machine designed to eliminate rats. It is equipped with highly sophisticated technology and programming. When in operation, its screen displays various data every 10 to 20 seconds, such as the supply voltage, the activation of bird protection mode, the number of rodents electrocuted, false detections, and the number of intruders.

The trap's electronics also signal if an infrared barrier is obstructed or dirty. In the event of a problem, the trap can shut down automatically. In the presence of daylight or if the lighting of a

When the building is lit, the trap emits a long beep every 10 to 20 seconds to signal a problem. Two short beeps indicate that one or more rats, mice or other rodents have been electrocuted. When the trap emits a beep, it is recommended that you take action as soon as possible. After two or three days, if you have not had to intervene on a trap, we recommend that you check the information on the digital screen.

Be sure to follow the instructions displayed on the screen before taking any action. You can remove the dead rodents without disconnecting the trap, but for any technical intervention, it is essential to disconnect all power sources to avoid the risk of electrocution.

The events displayed on the screen will automatically disappear when you switch off the trap. When the trap is switched on, for a few milliseconds, it will display the number of electrocutions, intruders and false detections since the trap was first switched on.

When the Maxi-Prises trap is switched on, a series of checks will be carried out: For a few milliseconds, the digital screen will display:

R = Total number of electrocutions since the trap was first switched on. This indicates the total number of rodents you could have eliminated. These are usually rats and mice.

R	0	0	1	2	5
---	---	---	---	---	---

F = Number of false detections since the trap was first activated. The trap may be triggered by wind blowing straw, feathers, cobwebs, flies, etc. Avoid false detections to prevent premature wear and tear on the trap. Furthermore, in the event of a false detection, the trap remains inactive for a certain period of time.

F	0	0	0	0	5
---	---	---	---	---	---

I = Number of intruders since the trap was activated. Intruders such as hedgehogs, pigeons, cats (too large to fit into the 75 mm pipe), partially poisoned rats, and old rats unable to reach the electrocution chamber will be released after approximately 3½ hours.

I	0	0	0	0	5
---	---	---	---	---	---

During the check (approximately 2 seconds), the trap emits a short beep, closes and also checks the three infrared barriers IR1, IR2 and IR3. It then opens, emits a short beep, displays "Ok" on the digital screen, and indicates a voltage of +-12.3V every 10 to 20 seconds, which means that the trap is armed and ready to capture. If the trap displays "bird protection", it will be paused and will activate automatically in the dark.

If there is a long repetitive beep, check the message on the screen and disconnect the power supply to the trap. 1 long beep= r error(s) 2 short beeps= Rat(s), rodent(s) electrocuted. These signals are repeated every 10 to 20 seconds.

IR1, IR2, IR3 problem: If one or more infrared barriers are obstructed, the trap emits a long beep and the screen displays the IR (IR1, IR2 or IR3) causing the problem. Remove whatever is obstructing the IR barrier or clean the IR guards with a soft cloth!

I	R	-	1,	2,	3,
---	---	---	----	----	----

When the trap is set:

If the trap is powered by a 230V-12Vdc adapter, the screen displays +- 12.3 Volts.

5. How to place DétruiRAT® traps?



- Choose a suitable location: Find a suitable place to set the trap. Avoid sloping ground; the trap must be placed on a perfectly flat, solid surface so that a rat cannot dig underneath it and escape.



- Avoid gaps between the ground and the trap: Ensure there are no gaps between the ground and the trap, as even small spaces allow rats or small rodents to escape.



- Use a solid support surface: As DétruiRAT® traps do not have a base, you will need to use a support plate if the ground is uneven or porous. You can use a hardwood or marine plywood board, a concrete slab, or a metal plate. This surface must be at least 22 cm wide so that the edges of the trap rest properly on the plate.



- Ensure the plate is long enough: The support plate should be at least 160 cm long to provide adequate surface area for the trap. It should extend at least 25 cm on either side of the trap tunnel entrance so that the rat or rodent walks on the plate before reaching the trap entrance, making them less wary.



- Protect the trap from the elements: D truiRAT® traps are not designed to be exposed to rain. Be sure to protect them from the elements by placing them in a sheltered location.

These precautions are essential to maximise the effectiveness of D truiRAT® traps and increase your chances of safely capturing rats and rodents.

6. How to place bait in D truiRAT® traps?

Place your trap about 20 cm from the desired location and make sure it is aligned with the trail of bait you will be laying on the ground. Start by spreading the bait in a line or thin layer 10 to 15 cm wide over a length of about 1.6 metres. There is no need to use too much bait, as the rats may become satiated before they reach the trap door.

Once the bait is in place, lift the trap and position it over the bait. You can put a little more bait at the entrance to the trap and in the centre, where the trap will be placed.

In principle, once you have set the trap, the bait should extend beyond each end of the trap by approximately 50 cm. This will allow the rats to eat the food while slowly approaching the trap until they are caught.

A few guidelines:

- Be careful not to use bait larger than 1.2 cm in diameter or a layer of bait thicker than 1.2 cm. This could obstruct the infrared barriers and cause the trap to malfunction.
- Also, be careful not to place bait directly under the doors. If a rat is caught, the doors may remain ajar (see video).
- Be careful not to touch the food you place in the traps. Use a bowl or ingredient scoop to handle the food, and make sure the tool is clean and does not alter the taste of the bait, so that the rats are not disturbed by your scent on the food.

7. What bait should you use?

The best baits are foods that rats are accustomed to eating in their environment.

After five years of research, trapping more than 3,000 rats, viewing thousands of videos and testing different baits in various environments, we have discovered that the best baits are foods that rats are accustomed to eating where they live.

Rats tend to avoid unfamiliar food, as anything unknown to them seems potentially dangerous. They have excellent sensory and olfactory memories, which means they can detect changes in their environment, including new smells or flavours. When they detect an unfamiliar substance, they instinctively mistrust it to avoid poisoning themselves. In addition, rats have the ability to quickly learn to avoid certain substances that have caused them problems in the past. If a rat has ever been poisoned or seen other rats in its group being poisoned, it will become even more wary of any suspicious food.

During our research, and knowing that rats are capable of eating anything, we tried different types of bait: peanut butter, chocolate, spread, powdered milk, fishing bait, a variety of seeds, fish-, poultry- and meat-flavoured dog and cat food, corn, fruit, vegetables, meat, fish (natural, smoked or salted), eggs, cheese, pork fat (lard), barbecue sauces, flavoured meat, and other substances likely to attract them. It must be said that the perfect bait remains the food they eat every day in their environment. A versatile bait would consist of muesli (a mixture of flakes, cereals and dried fruit) that is as inexpensive and natural as possible.

We have noticed that rats are particularly fond of one type of cattle feed: a mixture of molasses-based cattle feed. Using this bait, we have been able to trap a large number of rats, mainly on farms where this feed is given to cattle. When we changed locations, we were never able to trap a single rat with this bait, which seemed miraculous to us!

Other tips:

- Avoid using perishable food: it could attract flies, trigger false detections, and you will have to replace it regularly.
- Be aware that rats are finicky eaters: they always seek out the best food, the food they are familiar with and that is as fresh as possible. If you manage to remove their usual food source, they will be more inclined to eat whatever is available, and you will have a better chance of trapping them successfully.
- If you are a private individual and you have canaries or a few farmyard animals, use the food you give your birds or animals as bait, such as muesli (a mixture of flakes, cereals and dried fruit) that is as cheap and natural as possible. This approach to baiting rats is versatile and works well.

8. How to trap rats: three methods for trapping rats effectively.

8.1. Preventative trapping: If there are no rodents present, place bait-free traps along walls and near entrances for effective prevention. It is much easier to trap rats and other rodents preventatively, when they are searching for new territories. As they are not yet familiar with the area, they will be less wary of the traps. DétruiRAT® traps have been specially designed to resemble their natural environment. A rat looking for a new place to live may even think that a DétruiRAT® trap could serve as a refuge to protect it from predators. It is advisable to leave the traps in place even when there is no rodent activity, as this makes them easier to trap.

8.2. In the event of an infestation of rats or other rodents, use DétruiRAT® Maxi-Prises traps: If you notice droppings, a strong smell of urine, or if you see rats during the day or in the evening, this may indicate a rodent infestation. In this case, it is imperative to react quickly, as you may be facing a rat infestation. If you see droppings of different sizes, this means that there are several generations of rats, and therefore a considerable number of rats. Place the traps along walls and in other places where rats are likely to travel. Rat burrows are always located as close as possible to their food source. If you know where it is, place a trap nearby with a thin layer of their favourite food, the kind they usually eat in your home. If you do not know where it is, be aware that their nests can be found in bags of wood chips, bales of straw or hay, piles of logs, cardboard boxes, under pallets, and in any storage area or place where they feel isolated and safe. Do everything you can to prevent rats from accessing your pets' food or any other food supplies.

8.3. Be smarter than rats, trap them indoors and outdoors: in less than a year, we trapped more than 1,000 rats while conducting tests at one of our customers' premises (rats reproduce very quickly, so their nests multiply exponentially). Company managers began by eliminating places where rats could nest inside buildings and, thanks to DétruiRAT® traps, quickly trapped and eliminated them. They then worked to prevent rats from outside from entering the buildings, as the large, hungry rats had begun to attack the foundations and doors. Several traps were then placed outside the buildings, resulting in massive catches. In addition, to deter the rats from damaging the buildings, we left small openings for them to pass through and installed DétruiRAT® Maxi-Prises traps right in front of them. To get in, they had to pass through the traps. In one Maxi-Prises trap, we managed to catch 16 rats in one night using this strategy. Another night, using other traps, we caught 33 rats. The following nights were quieter, suggesting that the rats had been driven out or had left in search of other, less hostile territories. Remember, however, that as long as there are rats in your environment, the problem will not be solved. Rats will always return and may even use old burrows. That's why you should never leave a DétruiRAT® trap inactive. They must always be ready to operate, even in the absence of rodents.



Please feel free to share any methods you may use to effectively trap rats. Despite our research and testing, there is still much to learn about these rodents in order to achieve mass captures.

9. Take action and develop your rodent control plan. Afscfa and other standards.

Cancel your pest control contracts and design your own rodent control plan using DétruiRAT traps. By following our advice, it's quite simple and you'll make significant savings while achieving clean and effective results quickly. DétruiRAT traps are environmentally friendly and do not use poison. To ensure that DétruiRAT traps work properly, avoid using poisons or any other derivatives.



In Europe, other countries, including islands, and other continents, laws impose obligations regarding rodent control, notably the AFSCA, the Federal Agency for the Safety of the Food Chain in Belgium.

DétruiRAT traps meet the requirements of many laws and regulations on rodent control. Refer to the standards in force in your region or country and establish your pest control plan using DétruiRAT traps.

Maintaining the traps will take very little time. Once installed, in the morning, in daylight or when you turn on the lights in your business, traps that have caught rodents will emit a repetitive sound signal, and the digital screen will display events such as the number of rats eliminated. All you have to do is remove the carcasses. Unlike poison and other rat control systems, there is no risk of contaminating food supplies or having decomposing carcasses in inaccessible places.

Follow our advice and you will be able to easily draw up your rodent control plan. Depending on the extent of the rodent infestation in your business, choose the locations where you will place the DétruiRAT traps. [How to trap rats and where to place the traps.](#)

Also choose the number of traps and the models you are going to place. [How many traps should I place?](#)

On a map or sketch, indicate the locations where the DétruiRAT traps are placed, noting the type of trap. During an inspection, this will help agents quickly locate the traps. **Also note the bait you have placed in the traps.** [What bait to use in DétruiRAT traps.](#)

Include a copy of the invoices for the DétruiRAT traps in your rodent control plan file, along with copies of **all invoices or documents proving the efforts you have made to control rodents. Sign and attach the DétruiRAT trap operating certificate.** This certificate is provided with the traps and is specific to DétruiRAT traps.

The DétruiRAT trap operating certificate must be included in the rodent control prevention plan so that the inspector can verify that the traps are working properly. This document must be completed and signed by the manager or person(s) responsible for trap maintenance.

Follow the information on our website and watch our videos. In less than an hour, you will learn all about DétruiRAT traps, how to install them, and which baits to use.

10. Maintenance of DétruiRAT traps.

DétruiRAT traps require little maintenance, but avoid placing them in areas exposed to rain or humidity. [If you need to service the trap, please disconnect all power sources. The trap is powered by 12 V, but a transformer increases the voltage to 6000 V! You could be at risk of electrocution.](#)

When servicing the trap, it is recommended that you wear gloves, but make sure that they are not impregnated with any products and that they do not give off any odour. Avoid impregnating the traps with any odour that could make the rats wary.

Depending on where the traps are used and their environment, dust or other elements may accumulate. If you hear a continuous beep with IR1, IR2 or IR3 displayed on the digital screen when you activate the DétruiRAT traps, remove the disruptive element that is obstructing the infrared barrier. If the problem persists, clean the infrared guards by wiping them with a clean, unscented, slightly damp cloth, and remove any nests, spider webs, etc. You can remove the infrared cover to clean the inside properly, including the infrared LEDs.

Avoid applying any lubricant to the trap parts, as oil or grease could accumulate dust, hindering the closure of the doors and mechanism, which would lead to premature wear. If dust accumulates in the slides despite following these recommendations, carefully remove it with a cotton swab, stick or plastic rod, taking care not to scratch the

slides and doors. The smell of some lubricants may repel rodents and render the trap completely ineffective.

If the 1/4 turn locking and start/stop lever on the traps is rusted, use WD-40 penetrating oil with caution. Place a cloth under the seized part and spray the minimum amount necessary to loosen it.

For the "DétruiRAT Vif", "Mini Prise" and "Mort ou Vif", if a door remains stuck, clean the slides and if the problem is due to the electromagnets, remove the two small screws inside the tunnel to remove the electromagnet cover and inject a minimal amount of WD-40 by activating the electromagnet pivot. Wipe off any excess.

Electrocution problem: For the Maxi-Prise trap, it is crucial that the number of rodents electrocuted corresponds to the number displayed on the screen. Otherwise, an electrocution problem may occur. Disconnect the trap and clean the four electrodes with a brass wire brush or metal sponge. Check the cable located below the electrocution cell on the left-hand side.

To access the interior, disconnect the trap's power supply and remove the tray. In the trap, where the tray is located, on the left, there is a half-moon-shaped opening in the metal sheet. There is a pivot that you can operate to turn it halfway. Doing this will open or close both doors and the electrocution cell. This pivot also allows you to check whether there is any stiffness in the trap mechanism. In the correct position, this will make it easier for you to clean the four electrodes. To do this, please wear clean, odourless gloves and a mask to avoid inhaling dust. When brushing the electrodes, hold the back of the electrocution cell plate so as not to put pressure on the mechanism's connecting rods.

For Mini-Prise and Mort ou Vif traps, simply disconnect the trap's power supply, unlock the front of the electrocution cell, open it and clean the electrodes. Be careful not to damage the infrared sensors inside the trap.

11. Safety of DétruiRAT® traps

If you follow our recommendations, the traps will destroy pests without any danger to users. All traps have two safety features to prevent electrocution: one is built into the central part of the trap. If the rat collection tray is not in place, the trap will not activate, and the other safety feature is activated by the lever when the trap is locked.

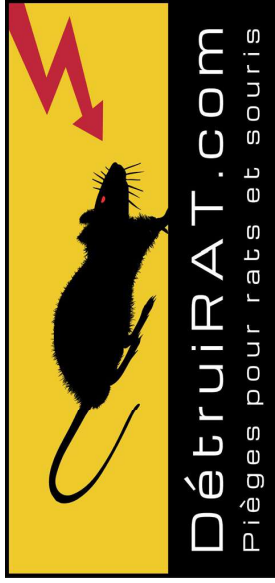
12. Recycling the device

The packaging is made entirely of environmentally friendly materials. The cardboard can be placed in a paper collection bin. The packaging film must be taken to your local sorting and recycling centre.

When you no longer use the device, dispose of it in an environmentally friendly manner and in accordance with legal guidelines.

13. Lithium battery

You must recycle batteries in accordance with the legislation in your place of residence. Collection points for batteries are generally available at sorting and recycling centres, supermarkets and other public places.



Eureka-Concept Ltd

rue houssière, n°1

7911 Frasnes-lez-Anvaing Belgium

Company number:

0862.995.241 Email:

info@detruiirat.com

's certificate of conformity for the proper functioning of Détruirat traps:

A single certificate is sufficient for all Détruirat traps used in your rodent control plan.

Détruirat traps feature cutting-edge technology and programming that display events, detect problems and indicate that the trap is working properly.

The proper functioning of Détruirat Mini-Prise, "Mort ou Vif" and "Maxi-Prises" traps can be detected as follows:

- If the screen displays between 1.1.6V and 13.2V every 10 to 20 seconds.
- If the screen displays "bird protection" (the trap is off and will automatically turn on in the dark).
- If nothing is displayed on the screen, it means that the trap is not working. Connect the trap and, if there is a fault indicated by a long repetitive beep, follow the instructions displayed on the digital screen.

In order for the inspector to approve your rodent control plan, the maintenance manager(s) must be fully familiar with the operation and recommendations for using Détruirat traps.

Date:

Name of authorised representative(s):

Signature:

DÉCLARATION DE CONFORMITÉ

Conformément à la directive 2014/35/EU relative à la basse tension (LVD)

1. Identification du produit :

Nom commercial : DétruIRAT
Modèles concernés :
- DétruIRAT@ Mini-Prise 6000V
- DétruIRAT@ Maxi-Prises 6000V B VZ
- DétruIRAT@ Mort ou Vif 6000V
Tension nominale : DC 12V 2.5A (30W)
Adaptateur AC/DC : 100-240V~1.5A 50/60Hz - Sortie 12Vdc 2.5A - Classe II

2. Fabricant :

Nom : Eureka-Concept srl
Adresse : Rue Houssière, n°1, 7911 Frasnes-lez-Anvaing, Belgique
Responsable : Luc Michel (Gérant - Inventeur)

3. Objet de la déclaration :

La présente déclaration est établie sous la seule responsabilité du fabricant.

4. Objet de l'évaluation :

Le produit mentionné ci-dessus est conforme aux exigences essentielles de sécurité de la directive 2014/35/EU (Basse Tension), telle qu'attestée par des essais réalisés par un laboratoire indépendant accrédité.

5. Norme appliquée :

EN 60335-1:2012 + A11:2014 + A13:2017 + A1:2019 + A14:2019 + A2:2019 + A15:2021 + A16:2023

6. Organisme d'évaluation :

SGS Belgium NV - Division SGS CERBEC
Riverside Business Park, Internationalaan 55 - Bât. A
1070 Bruxelles - Belgique
Rapport d'essai n° 634819,01 - Date : 4 juillet 2025

7. Signature :

Fait à Frasnes-lez-Anvaing, le 8 juillet 2025

Nom : Luc Michel

Fonction : Gérant d'Eureka-Concept srl

Signature : 

Ce document peut être fourni aux autorités de contrôle et aux distributeurs. Le rapport complet d'essai est disponible sur demande.

DÉCLARATION DE CONFORMITÉ CEM TESTS D'IMMUNITÉ

Fabricant :

Eureka Concept srl
Rue Houssière, n°1
7911 Frasnes-lez-Anvaing
Belgique

Produit :

Piège à rats DétruIRAT
Référence modèle :
- DétruIRAT@ Maxi-Prises 6 000 V @VZ
- DétruIRAT@ Mini-Prise 6 000 V
- DétruIRAT@ Mort ou Vif 6 000 V

Déclaration :

Nous, soussignés, déclarons que l'équipement désigné ci-dessus a été évalué conformément aux exigences de compatibilité électromagnétique (CEM) suivantes :

Normes appliquées :

- CISPR 14-2:2020 - Electromagnetic compatibility - Requirements for household appliances, electric tools and similar apparatus - Part 2: Immunity - Product family standard
- EN 55014-2:1997 + A1:2001 + A2:2007 - Norme harmonisée selon la directive CEM 2014/30/EU
- EN 55014-2:2021 - Compatibilité électromagnétique - Prescriptions d'immunité applicables - IEC / EN 61000-4-2 - Essais d'immunité aux décharges électrostatiques (ESD)

Résultats des essais :

Les essais ont été réalisés dans un laboratoire accrédité selon les protocoles définis par les normes mentionnées. Le produit a satisfait à l'ensemble des exigences, démontrant sa conformité à la directive européenne 2014/30/EU relative à la compatibilité électromagnétique.

Informations sur les essais :

CEM-EMC Laboratory - ACE - ULège
Institut Montefiore, building B28
Polytech 1, Allée de la Découverte, 10, 4000 Liège - Belgium
Numéro de rapport d'essai : 250415/1448/AAHU0001A
Date des essais : 15 avril 2025

Signature :

Fait à Frasnes-lez-Anvaing, Belgique, le 23/04/2025

Nom: Luc Michel

Fonction : Gérant d'Eureka-Concept srl

Signature : 

Ce document peut être fourni aux autorités de contrôle et aux distributeurs. Le rapport complet d'essai est disponible sur demande.